

Tanorama Limited (PNG)'s mission is to promote the involvement of Papua New Guineans and Papua New Guinean companies with sustainable aid and development projects being undertaken in Papua New Guinea and the South Pacific Region.

Tanorama also provides support services to a range of national and international organisations and government agencies in PNG and the South Pacific Region.

Tanorama Australia seeks recognition in Australia and internationally as a source of high quality expertise in the design, appraisal and management of development projects.

Our success is our ability to secure and support highly qualified persons as consultants and advisers to the Australian and overseas governments, in major development areas of agriculture, education and health.

Associated companies

Renewable Solutions focuses on evaluation and application of appropriate technologies for rural development, such as the use of solar, wind or micro-hydro power systems for use in village or community development projects.



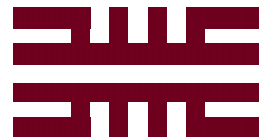
'Tamoale Arts primary mission is to provide marketing and awareness support to Tanorama's aid and development projects.

To register with the Tanorama Consultant Database or to access advisers contact:

Martin Brash Director Projects
Boz Agrali Director Network

The TANORAMA Network is able to source and provide specialists for long or short term assignments even with short notice.

- Education & Training
- Health
- Community Development
- Information Technology
- Primary Industry & Natural Resources
- Law & Order
- Engineering & Architecture
- Renewable Energy & Appropriate Technologies
- Financial Management
- Business & Public Administration
- Tourism & Hospitality
- Marketing & Promotions
- Film & Video



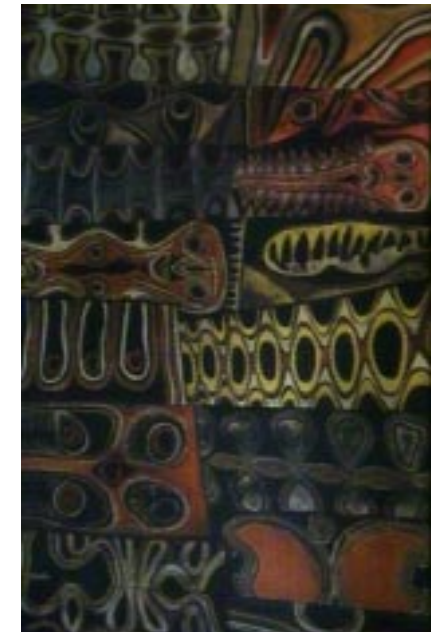
THE TANORAMA NETWORK

Tanorama Limited (PNG)
PO Box 313, Waigani NCD 131
+675 323 3962 fax: +675 323 0204
info-png@tanorama.com

Tanorama Australia Pty Ltd
PO Box 2762, Canberra ACT 2601
+612 (0)409 243 717 fax: +612-6253-5085
info-aus@tanorama.com

<http://www.tanorama.com>

THE TANORAMA NETWORK



*Project Management - Consultancy
Training & HR D*

<http://www.tanorama.com>

The TANORAMA Network was established in 1994 as a source of high quality expertise in the design, management and appraisal of international development projects. The concept of the "network" was seen by the persons and organisations that supported its establishment as an efficient means of maintaining contact with major development agencies - such as



Australian Agency for International Development (AusAID), the Asian Development Bank (ADB), the World Bank (WB) and United Nations (UN) organisations - while keeping in touch with each other. The members agreed that a network offered greater management and administrative efficiency to support their involvement in development assistance projects than a more traditional corporate structure.

The purposes of the Network are to gather and share information on development issues and activities, and to jointly pursue consultancies and projects that match the capabilities of members. The Network therefore maintains efficient communication, information and management systems designed to enable members to track, win and implement projects in the increasingly competitive market for development assistance. The Tanorama Network is a growing "bank" of persons with outstanding capacities and records of achievement in international development projects and consultancies.

The Tanorama Network commenced operations in Papua New Guinea (Tanorama Limited - C10154) and Australia (Tanorama Australia Pty Ltd - ACN 063 501 575) in 1994. These two companies have been involved with many research, design and implementation of development projects throughout the South Pacific, Asia and Africa.

The promotion of and networking with experienced professionals within the countries of operation and internationally have been a priority for Tanorama.

The cooperation between these companies in tracking, bidding and implementing projects,

Consultancy Services - Tanorama maintains an established database of over 1000 quality consultants from all over the globe available for all types of assignments throughout the Pacific and elsewhere.

Project Management - Tanorama is experienced in providing project management services on behalf of its clients. We have a proven track record in the successful management and completion of projects on time and under budget.



Nurses dormitory at UPNG
Taurama campus

Information Technology - We provide hardware and software support and IT expertise necessary to ensure data integrity. Tanorama offers customised training on computer systems and regular maintenance for its varied client base.

Utilising Tanorama's Consultants Database and the strategic alliances established in Australia, the USA and Asia, I.T. Solutions is able to access specialists to service both Corporate and Government bodies throughout the South Pacific region.

Training & Workshop Services - Tanorama can provide curriculum and course development, design and delivery by training specialists. We can also assist in arranging venues and logistics for all training and workshop activities. PNG culture and language courses are offered at the Port Moresby office.

Research and Analysis - With a unique project resources library containing a variety of reference material, particularly relevant for PNG and the Pacific nations, our qualified staff can undertake a wide variety of research assignments.

Financial Management - Tanorama manages project trust accounts and in-country spending for different projects and organisations.



Part of the group of 43 students undertaking Nurse Conversion Degree course, PNG

Experience - The Tanorama Network has experience in the following sectors:

Health

Education and Training

Agriculture & Renewable Resources

Transport and Infrastructure

Law & Order

Community

Technology

Environmental

Marketing & Promotions

Business Development



Coastal village, Central Province, Papua New Guinea